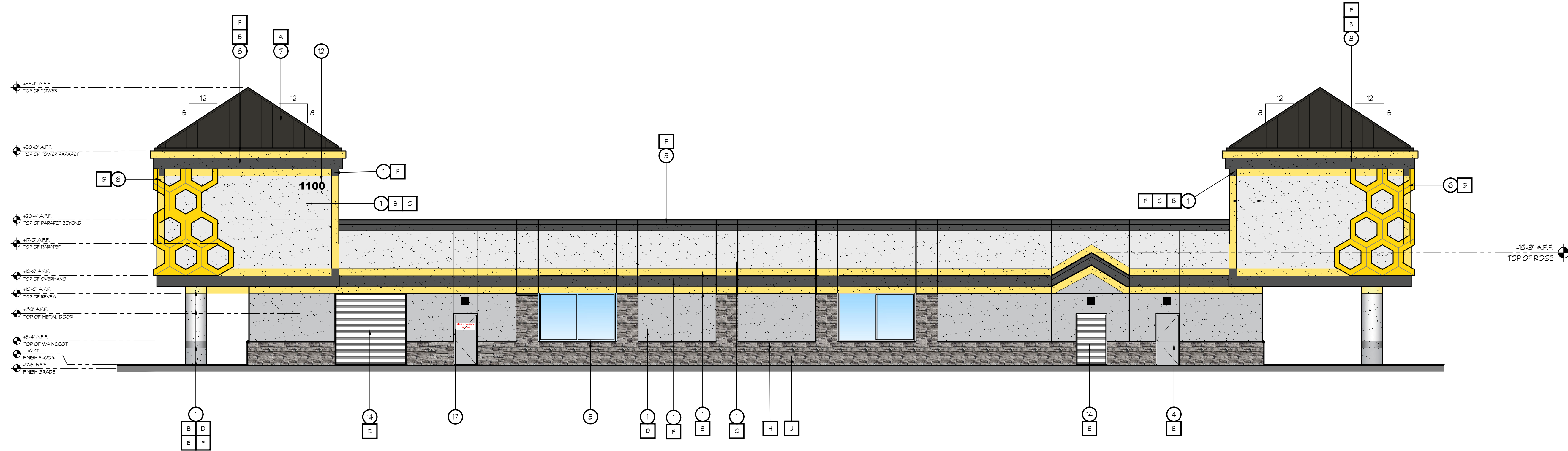
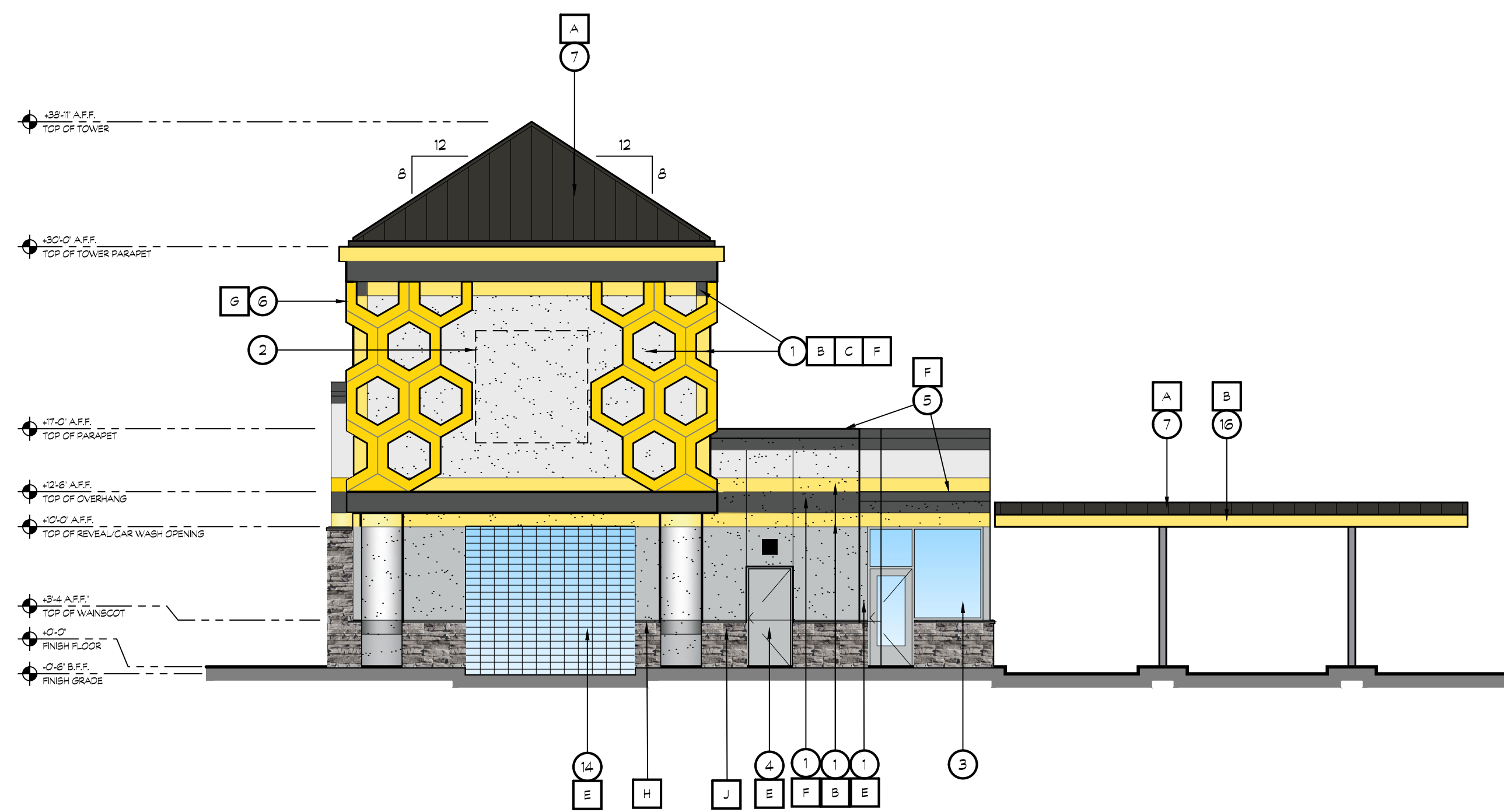


# PC EXHIBIT E



**18 CAR WASH SOUTH ELEVATION**

SCALE: 1/8" = 1'-0"



**20 CAR WASH EAST ELEVATION**

SCALE: 1/8" = 1'-0"

## KEY NOTES

- 1 THREE COAT STUCCO SYSTEM OVER WATER RESISTANT BARRIER
- 2 SIGNAGE BY OWNER
- 3 STOREFRONT WINDOW SYSTEM; DARK BRONZE ANODIZED, 2x4.5' CENTER GLAZING SYSTEM; WITH 1 CLEAR DUAL GLAZING
- 4 HOLLOW CORE METAL DOOR
- 5 ROOF TRIM
- 6 ACM PANEL
- 7 STANDING BEAM METAL ROOFING
- 8 FOAM PARAPET - PAINTED
- 9 WALL LIGHT BY OWNER
- 10 DRIVE-THRU WINDOW
- 11 NOT USED
- 12 STREET ADDRESS; 12' HIGH LETTERS, 1 1/2' STROKE, BLACK, BACKGROUND COLOR TO MATCH TRIM COLOR, WALL WASH ILLUMINATION
- 13 6'x6' PRIMED & PAINTED GALV. LOUVERED VENT W/ SCREEN (TYP. OF 4), SEE DETAIL 13, 14, AND 15 ON SHEET A803.
- 14 ROLL UP DOOR
- 15 NOT USED
- 16 CAR WASH CANOPY
- 17 FIRE CONTROL ROOM; 3' HIGH LETTERS MIN. W/ 1/2' STROKE AND SHALL BE RED ON WHITE REFLECTIVE BACKGROUND

## COLOR LEGEND

A	AEP SPAN METALS- 'MIDNIGHT BRONZE'	
B	DUNN EDWARDS PAINT DE6353- 'GOLDEN CREST'	
C	DUNN EDWARDS PAINT DE6358- 'VAPOR'	
D	DUNN EDWARDS PAINT DE6360- 'FOIL'	
E	DUNN EDWARDS PAINT DE6361- 'BABY SEAL'	
F	DUNN EDWARDS PAINT DE6364- 'CAVERNOUS'	
G	ALPOLIC METAL PANELS- 'YLW YELLOW'	
H	EL DORADO STONE: WAISCOT BILL-GREY SKY	
J	EL DORADO STONE: STAKED STONE: SILVER LINING	



K12 Architects, Inc  
3090 Fite Circle, #104  
Sacramento, CA 95827  
PH:(916) 455-6500 FAX:(916) 455-8100

CONSULTANTS:

CONTRACTOR:

PROJECT:

## BEE SHINE CAR WASH

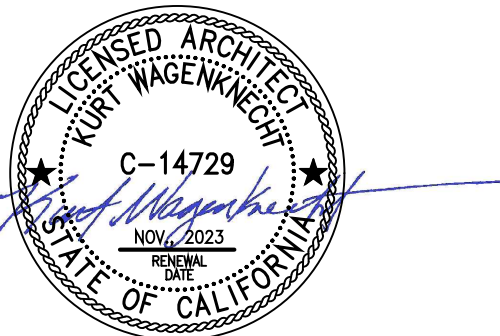
NEW CAR WASH

1100 ORLANDO AVE  
ROSEVILLE, CA 95661

DEVELOPER:

REVISIONS:  
PLANNING COMMENTS 1/26/23

PROFESSIONAL SEALS:



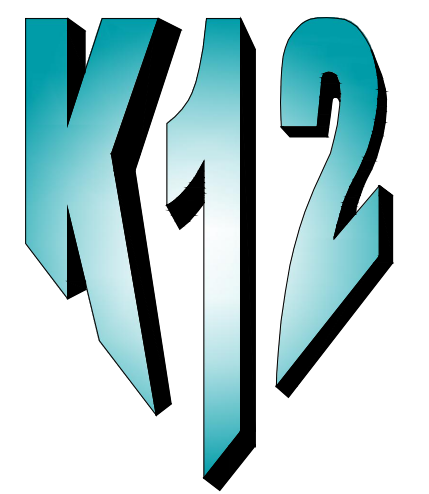
PROJECT NUMBER: 22-005 PROJECT DATE: 4-12-2022

SHEET CONTENTS:

CAR WASH  
EXTERIOR  
ELEVATIONS

SHEET NUMBER:

A302



**K12**  
**Architects**

K12 Architects, Inc  
3090 Fite Circle, #104  
Sacramento, CA 95827  
PH:(916) 455-6500 FAX:(916) 455-8100

CONSULTANTS:

CONTRACTOR:

PROJECT:

**BEE SHINE  
CAR WASH**

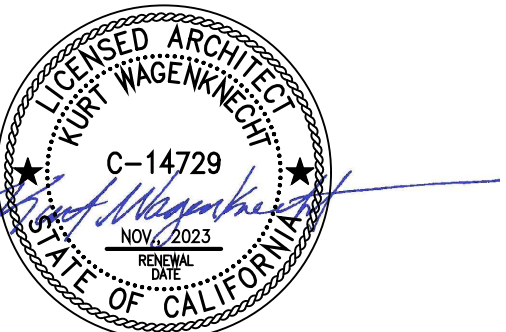
**NEW CAR WASH**

**1100 ORLANDO AVE  
ROSEVILLE, CA 95661**

DEVELOPER:

REVISIONS:  
PLANNING COMMENTS 1/26/23

PROFESSIONAL SEALS:



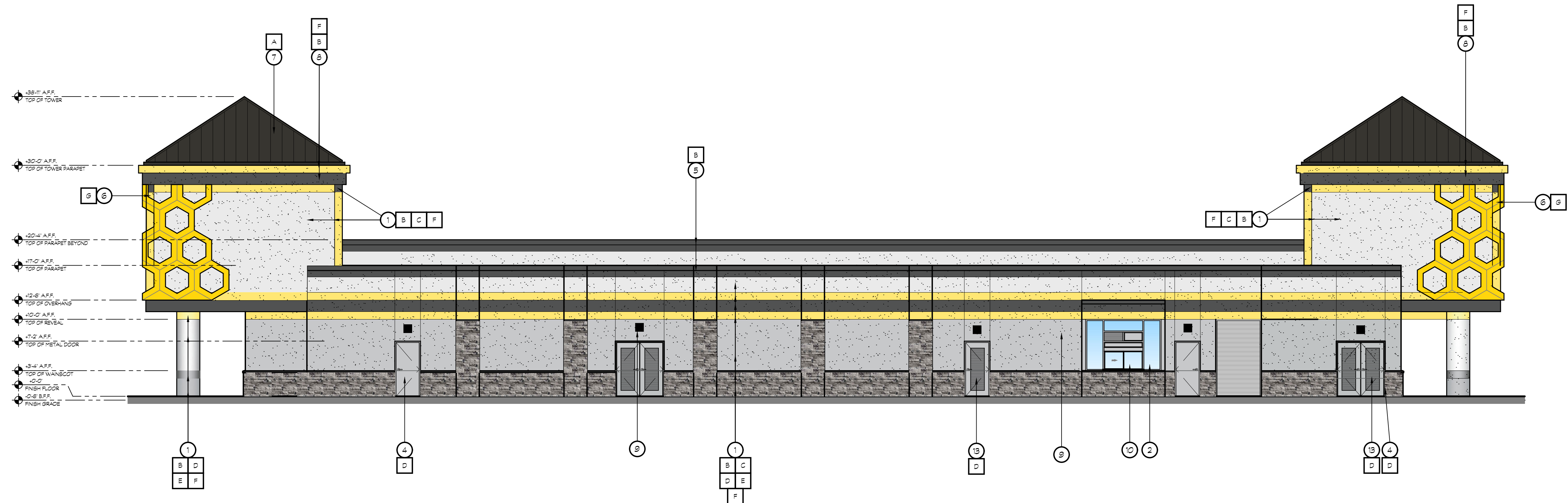
PROJECT NUMBER: **22-005** PROJECT DATE: **4-12-2022**

SHEET CONTENTS:

**CAR WASH  
EXTERIOR  
ELEVATIONS**

SHEET NUMBER:

**A301**



**18 CAR WASH NORTH ELEVATION**

SCALE: 1/8"= 1'-0"



**20 CAR WASH WEST ELEVATION**

SCALE: 1/8"= 1'-0"

**KEY NOTES**

- 1 THREE COAT STUCCO SYSTEM OVER WATER RESISTANT BARRIER
- 2 SIGNAGE BY OWNER
- 3 STOREFRONT WINDOW SYSTEM; DARK BRONZE ANODIZED, 2'x4.5' CENTER GLAZING SYSTEM; WITH CLEAR DUAL GLAZING
- 4 HOLLOW CORE METAL DOOR
- 5 ROOF TRIM
- 6 ACM PANEL
- 7 STANDING SEAM METAL ROOFING
- 8 FOAM PARAPET - PAINTED
- 9 WALL LIGHT- WEDGE DOWN LIGHT
- 10 DRIVE-THRU WINDOW
- 11 NOT USED
- 12 STREET ADDRESS, 12" HIGH LETTERS, 1 1/2" STROKE, BLACK, BACKGROUND COLOR TO MATCH TRIM COLOR, WALL WASH ILLUMINATION
- 13 24'x86' PRIMED & PAINTED GALV. LOUVERED VENT W/ SCREEN (TYP. OF 4), SEE DETAIL 13, 14, AND 15 ON SHEET A803.
- 14 NOT USED
- 15 NOT USED
- 16 CAR WASH CANOPY

**COLOR LEGEND**

- A AEP SPAN METALS- 'MIDNIGHT BRONZE' METAL ROOF PANELS
- B DUNN EDWARDS PAINT DE6353- 'GOLDEN CREST'
- C DUNN EDWARDS PAINT DE6355- 'VAPOR'
- D DUNN EDWARDS PAINT DE6360- 'FOIL'
- E DUNN EDWARDS PAINT DE6361- 'BABY SEAL'
- F DUNN EDWARDS PAINT DE6364- 'CAVERNOUS'
- G ALPOLIC METAL PANELS- 'YLW YELLOW'
- H EL DORADO STONE- WAISCOT SILL-GREY SKY
- J EL DORADO STONE- STAKED STONE- SILVER LINING



CONSULTANTS:

CONTRACTOR:

PROJECT:

**BEE SHINE  
CAR WASH**

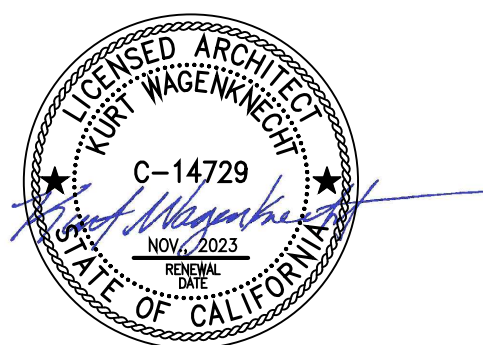
**NEW CAR WASH**

**1100 ORLANDO AVE  
ROSEVILLE, CA 95661**

DEVELOPER:

REVISIONS:  
PLANNING COMMENTS 1/26/23

PROFESSIONAL SEALS:



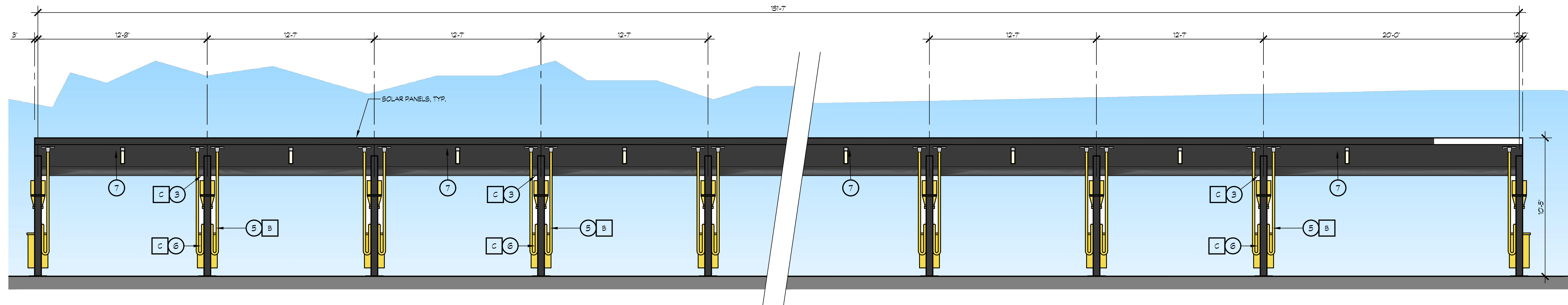
PROJECT NUMBER: **22-005** PROJECT DATE: **4-12-2022**

SHEET CONTENTS:

**VACUUM CANOPY  
ELEVATIONS**

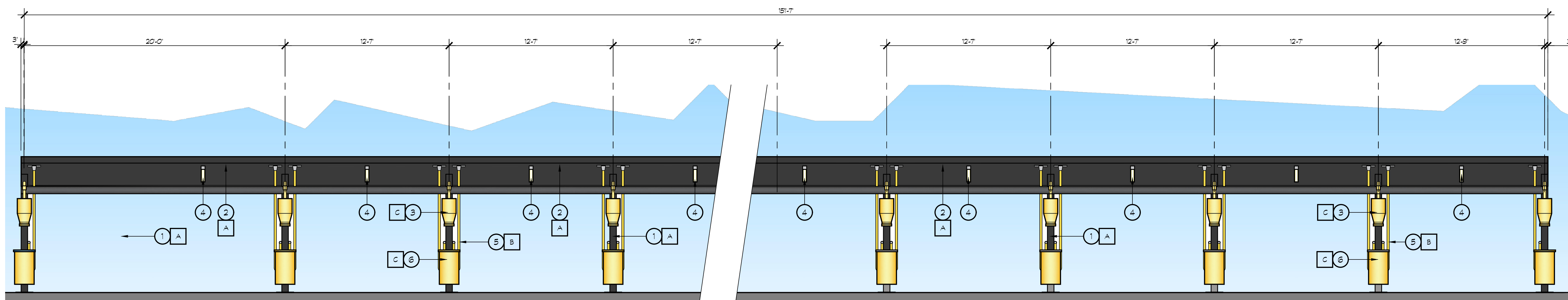
SHEET NUMBER:

**A304**



**18 VACUUM STATION NORTH ELEVATION (FROM DRIVEWAY)**

SCALE: 1/4"= 1'-0"



**19 VACUUM STATION SOUTH ELEVATION (FROM BUILDING SIDE)**

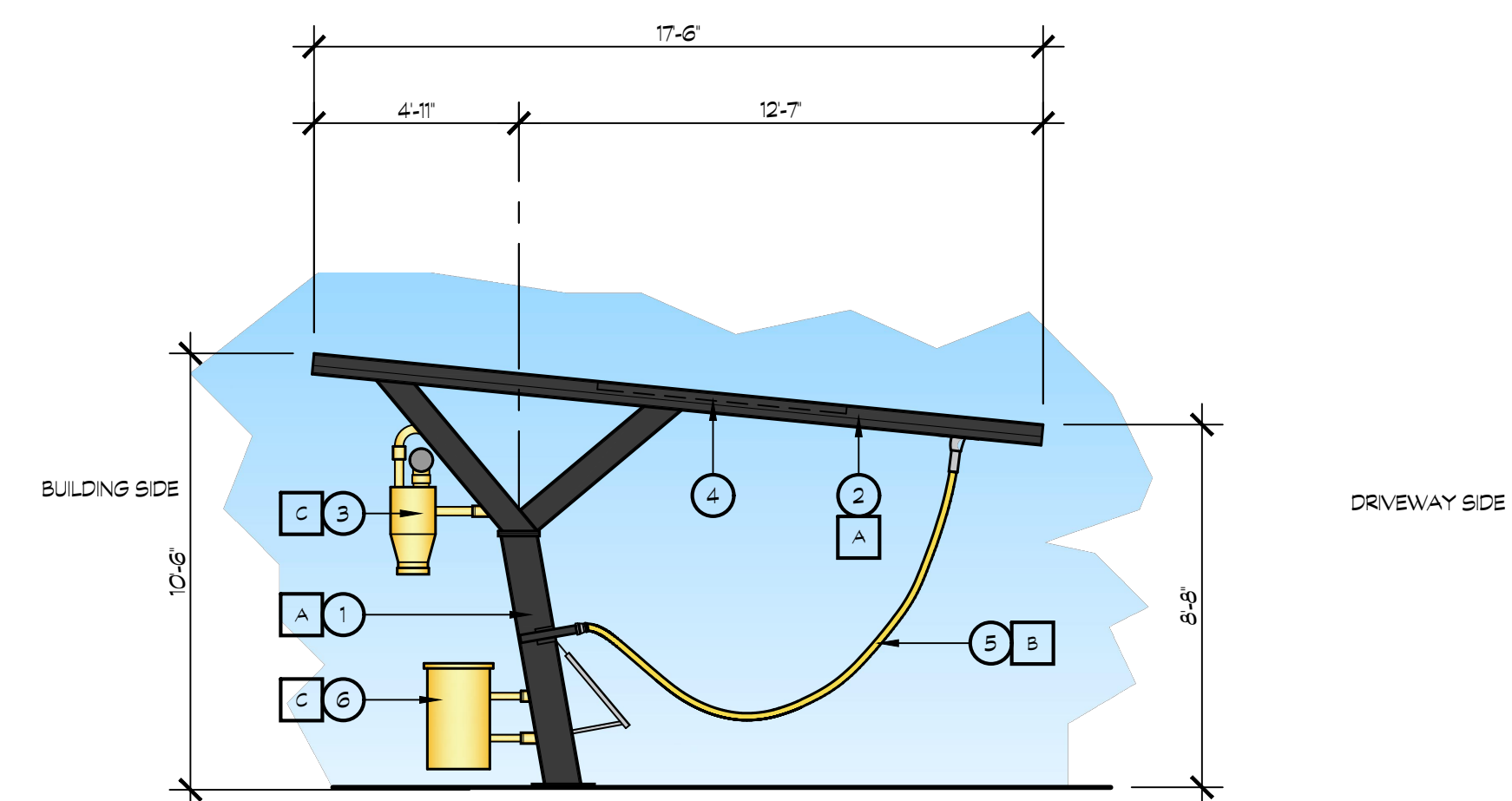
SCALE: 1/4"= 1'-0"

**KEY NOTES**

- ① STEEL COLUMN
- ② STEEL BEAM
- ③ VACUUM PIPES ETC
- ④ LED LIGHT FIXTURE, LOW PROFILE W/ SENSOR- SEE DETAIL 14/A107 FOR STYLE & DETAIL
- ⑤ VACUUM HOSE
- ⑥ FIXED METAL TRASH CAN
- ⑦ UNDERSIDE OF SOLAR PANELS

**COLOR LEGEND**

- A DUNN EDWARDS PAINT - DEAC02 - 'BLACK'
- B VACUTECH HOSE COLOR: 'YELLOW'
- S DUNN EDWARDS PAINT- DEAT18- 'GLDED'



**4 VACUUM STATION EAST ELEVATION**

WEST ELEVATION SIMILAR

SCALE: 1/4"= 1'-0"

CONSULTANTS:

CONTRACTOR:

PROJECT:

**BEE SHINE  
CAR WASH**

**NEW CAR WASH**

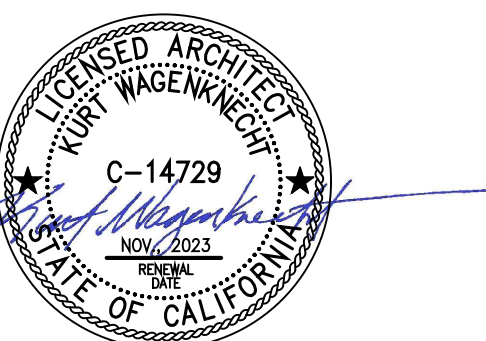
**1100 ORLANDO AVE  
ROSEVILLE, CA 95661**

DEVELOPER:

REVISIONS:

PLANNING COMMENTS 1/26/23

PROFESSIONAL SEALS:



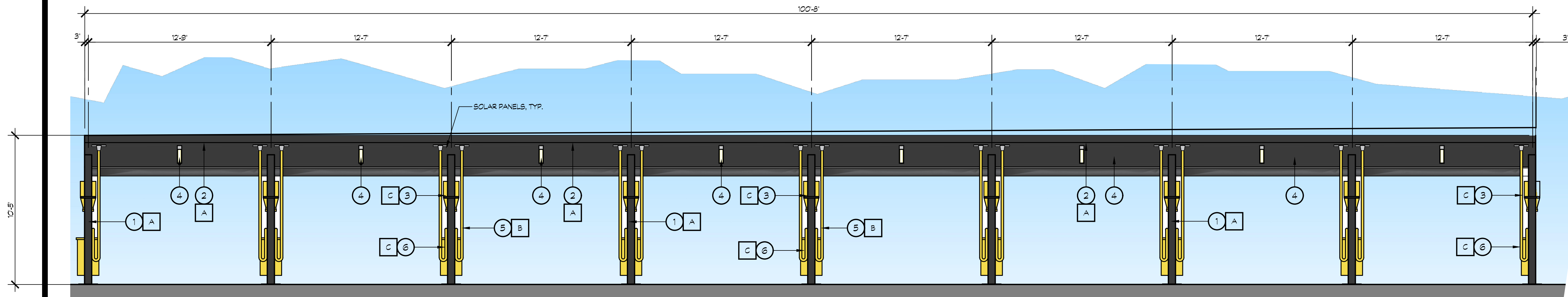
PROJECT NUMBER: **22-005** PROJECT DATE: **4-12-2022**

SHEET CONTENTS:

**VACUUM CANOPY  
ELEVATIONS**

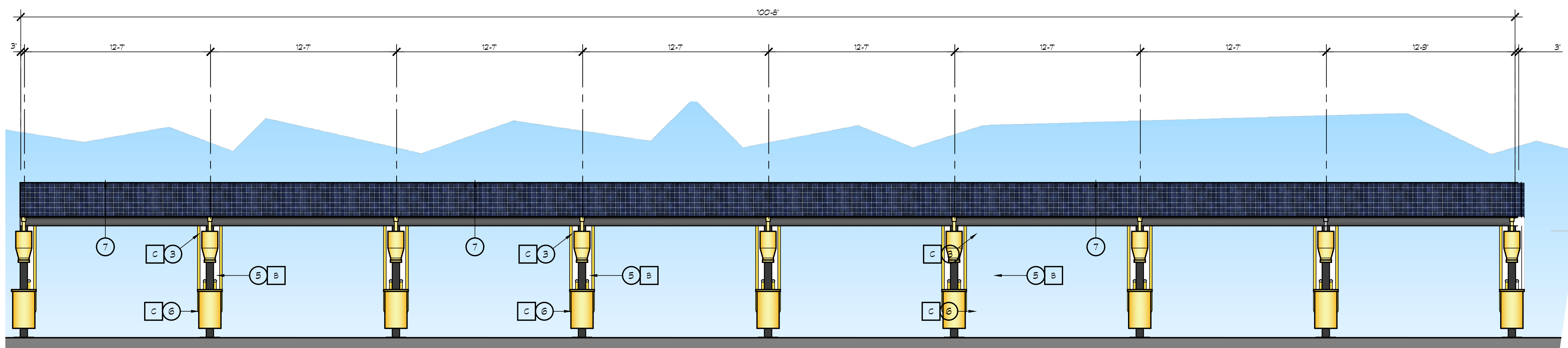
SHEET NUMBER:

**A305**



**18 VACUUM STATION NORTH ELEVATION (FROM DRIVEWAY)**

SCALE: 1/4" = 1'-0"



**19 VACUUM STATION SOUTH ELEVATION (FROM STREET SIDE)**

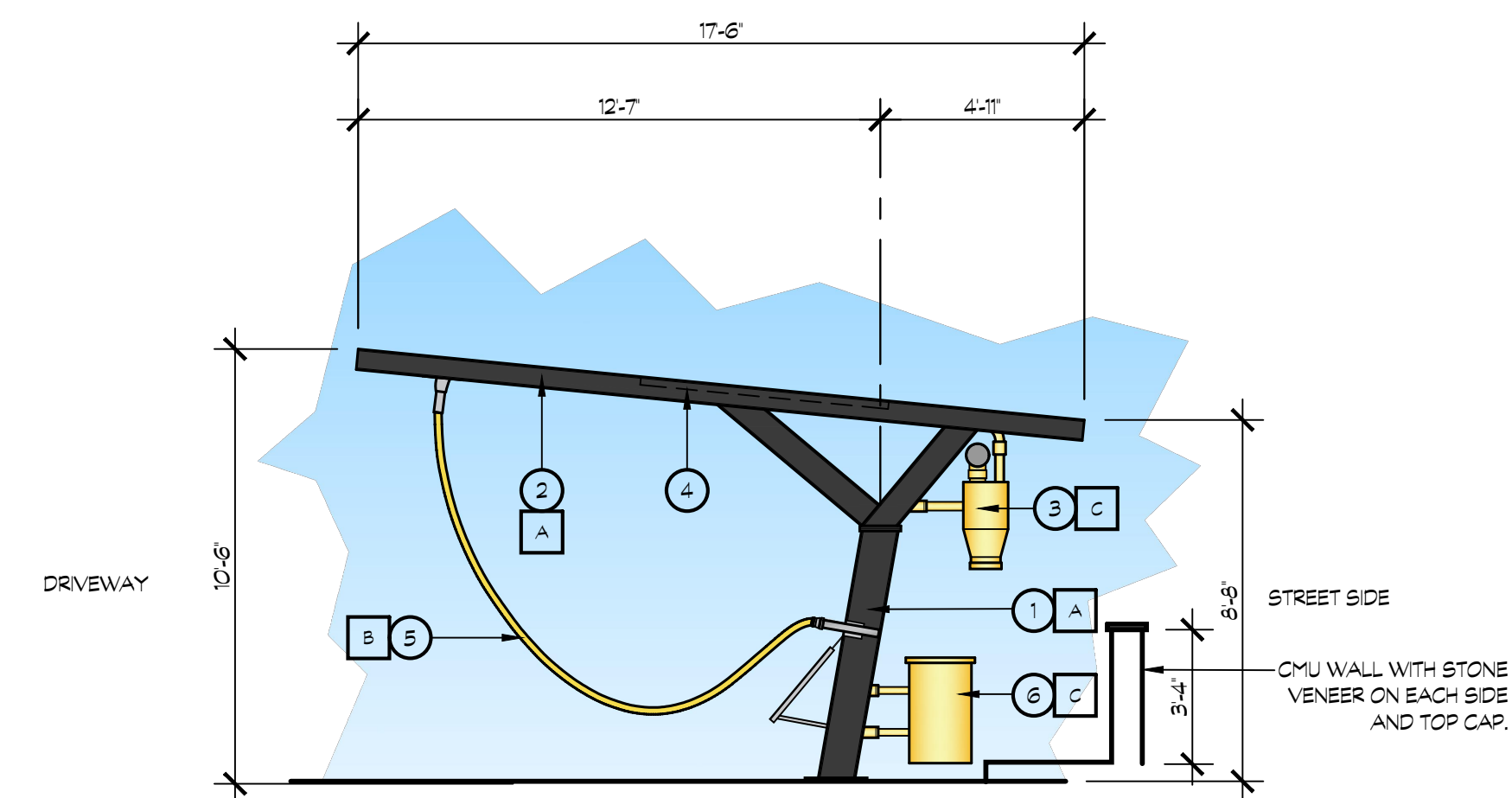
SCALE: 1/4" = 1'-0"

**KEY NOTES**

- ① STEEL COLUMN
- ② STEEL BEAM
- ③ VACUUM PIPES ETC
- ④ LED LIGHT FIXTURE, LOW PROFILE W/ SENSOR- SEE DETAIL 14/A107 FOR STYLE & DETAIL
- ⑤ VACUUM HOSE
- ⑥ FIXED METAL TRASH CAN
- ⑦ UNDERSIDE OF SOLAR PANELS

**COLOR LEGEND**

- A DUNN EDWARDS PAINT - DEAC02 - 'BLACK'
- B VACUTECH HOSE COLOR: 'YELLOW'
- C DUNN EDWARDS PAINT - DEAT1B - 'GILDED'



**4 VACUUM STATION EAST ELEVATION**

WEST ELEVATION SIMILAR

SCALE: 1/4" = 1'-0"



**K12  
Architects**

K12 Architects, Inc  
3090 Fite Circle, #104  
Sacramento, CA 95827  
PH:(916) 455-6500 FAX:(916) 455-8100

CONSULTANTS:

CONTRACTOR:

PROJECT:

**BEE SHINE  
CAR WASH**

**NEW CAR WASH**

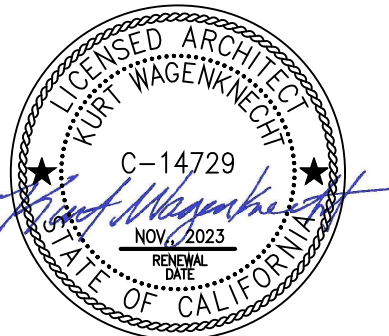
**1100 ORLANDO AVE  
ROSEVILLE, CA 95661**

DEVELOPER:

REVISIONS:

PLANNING COMMENTS 1/26/23

PROFESSIONAL SEALS:



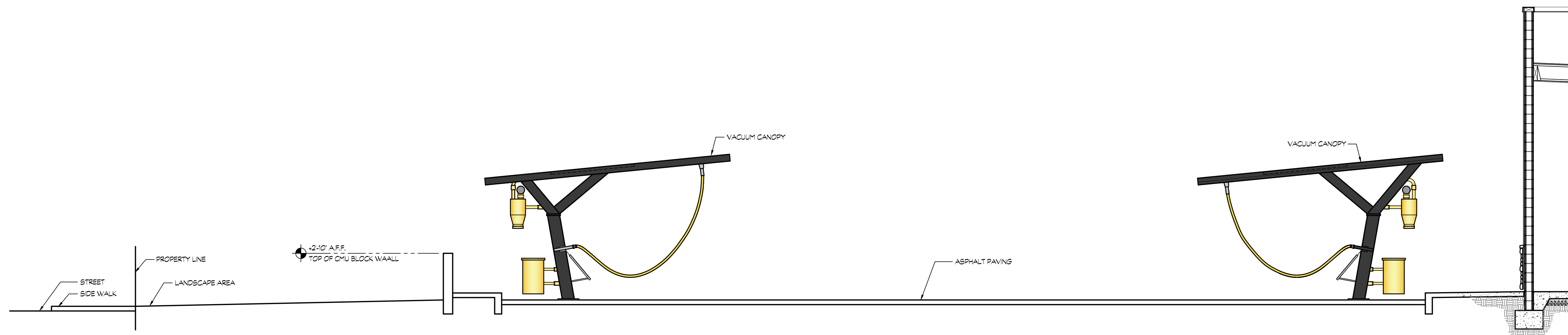
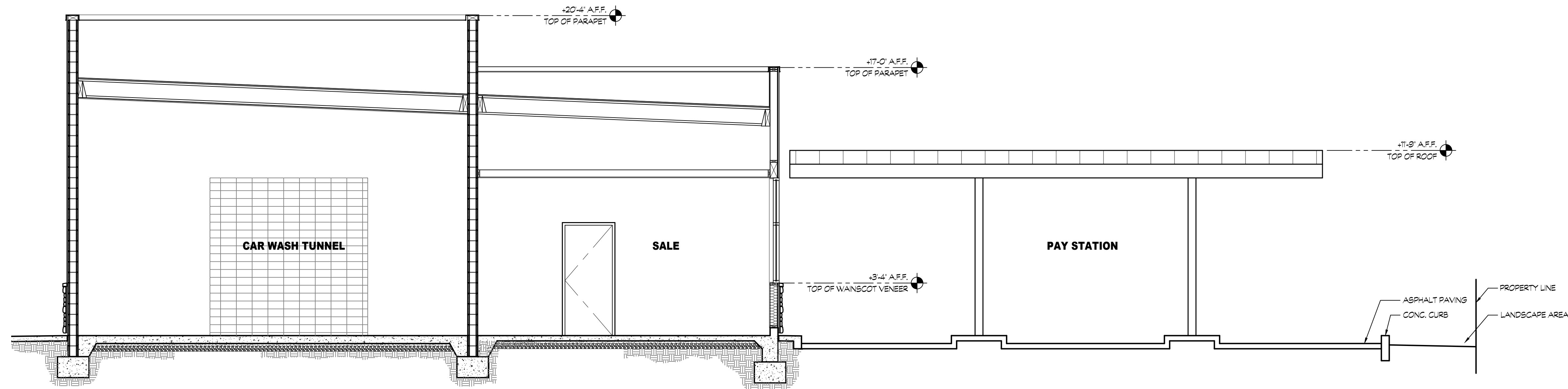
PROJECT NUMBER: **22-005** PROJECT DATE: **4-12-2022**

SHEET CONTENTS:

**CAR WASH BUILDING  
SECTIONS**

SHEET NUMBER:

**A401**



**A CAR WASH - SITE CROSS SECTION A-A**

SCALE: 1/4" = 1'-0"